

P6 Bell Work: Tell about the purpose of a “Common Board” in three to five sentences.

# Bell Schedule

|               |                    |
|---------------|--------------------|
| Warning Bell  | 9:20               |
| 1st Period    | 9:25-10:17         |
|               | change 10:17-10:22 |
| 2nd Period    | 10:22-11:22        |
| Announcements | 11:14-11:22        |
|               | change 11:22-11:27 |
| 3rd Period    | 11:27-12:49        |
| A lunch       | 11:27-11:57        |
| B lunch       | 12:19-12:49        |
|               | change 12:49-12:54 |
| 4th Period    | 12:54-1:46         |
|               | change 1:46-1:51   |
| 5th Period    | 1:51-2:43          |
|               | change 2:43-2:48   |
| 6th Period    | 2:48-3:40          |

## 6 Period Day



## Block Day



|                |                    |
|----------------|--------------------|
| Warning Bell   | 9:20               |
| 1st/2nd Per    | 9:25-11:05         |
| Announcements  | 11:05-11:12        |
|                | change 11:12-11:17 |
| 3rd/4th Per    | 11:17-1:23         |
| A lunch        | 11:17-11:43        |
| B lunch        | 12:57-1:23         |
|                | change 1:23-1:28   |
| Club/Cane      | 1:28-1:55          |
| Make-up Period |                    |
|                | change 1:55-2:00   |
| 5th/6th Per    | 2:00-3:40          |

Dates for Block: 8/17-18; 8/31-9/1; 9/14-15; 9/28-29; 10/12-13; 10/26-27;  
11/9-10; 11/30-12/1; 12/14-15; 1/11-12; 1/25-26; 2/8-9; 2/22-23; 3/8-9;  
3/29-30; 4/5-6; 4/12-13; 4/26-27; 5/10-11

## Early Release



|               |                    |
|---------------|--------------------|
| Warning Bell  | 9:20               |
| 1st/2nd Per   | 9:25-10:34         |
| Announcements | 10:34-10:42        |
|               | change 10:42-10:47 |
| 3rd/4th Per   | 10:47-11:56        |
|               | change 11:56-12:01 |
| 5th/6th Per   | 12:01-1:40         |
| A lunch       | 12:01-12:31        |
| B lunch       | 12:36-1:06         |



Essential Question:

How will I contribute to the Lake Weir High School community in a positive way?

What to expect from  
Biology Class?

What is expected of you?

# Materials



# Materials

**Materials must be brought to class on a daily basis!**

## **Daily tools:Daily tools:**

- **Pencil**
- **Pen**
- **Composition Notebook**

## **Personal tools:**

- **Positive attitude**
  - **Open mind**
  - **Work Ethic**
-

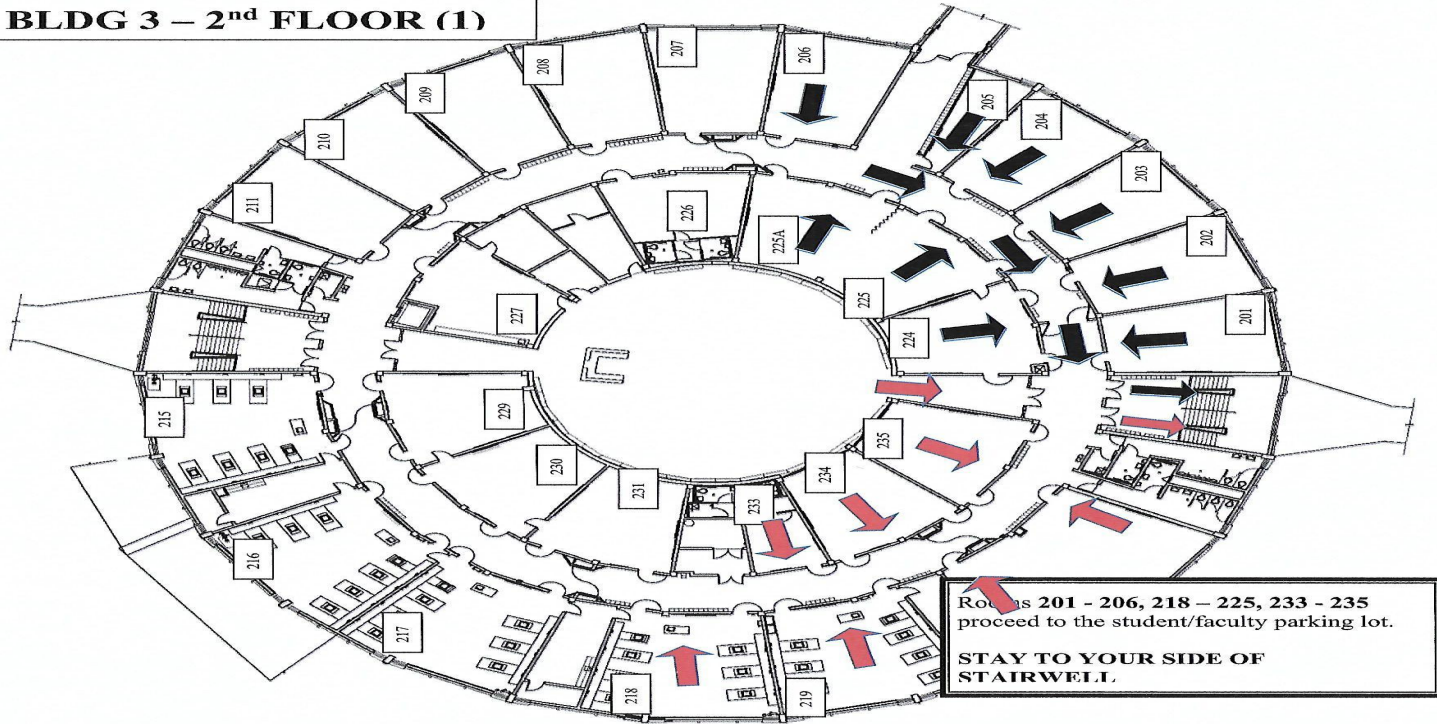
# Lake Weir High School Procedures

---



# FIRE AND EVACUATION ROUTE

**BLDG 3 – 2<sup>nd</sup> FLOOR (1)**



- **Sign-Out Procedures**
- **Tardy Log**
- **Dismissal Procedure**
- **Common Boards**
- **[Class Webpage](#)**



# Hypothesis



What do you expect to happen upon completion of this course?

What does Ms. Santana  
expect from you?

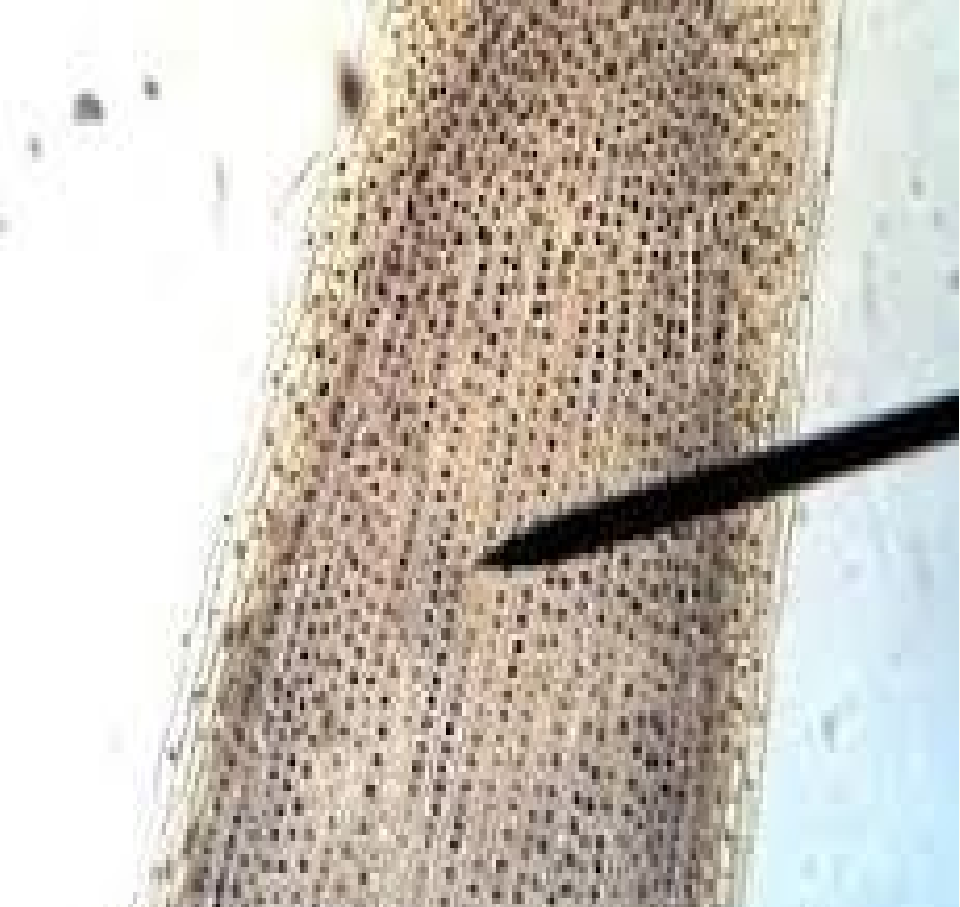
# Hypothesis support

**I think each individual student will achieve an above average score in all Florida Standard Assessments and pass this course with a true knowledge of Biology.**

**Variables that may affect the outcome...**

- Attitude
- Perseverance
- Responsibility
- Respect
- Service

| INTERPHASE                      |  | MITOSIS  |  |   |  |                           |                          |
|---------------------------------|--|--|--|---|--|---------------------------|--------------------------|
|                                 |  | Prophase   | Prometaphase   | Metaphase   | Anaphase   | Telophase and Cytokinesis |                          |
| Two centrosomes                 | Nuclear envelope                         | Microtubules forming spindle poles   | Spindle poles  | Metaphase plate   | Daughter chromosomes   | Nuclear envelope forming  | Chromosomes decondensing |
| Chromatin                       | Nuclear envelope                         | Centrosomes  | Fragment of nuclear envelope                                   |   |  | Flare of centrioles       |                          |
| The nucleus replicates its DNA. | The chromatin coils to form chromosomes. | The nuclear envelope breaks down. Microtubules connect the centrosomes to the chromosomes. | The microtubules line up the chromosomes at the cell's center. | The chromosome separate, and the new chromosomes pull toward the two centrosomes. | The separating chromosomes reach the poles. The nuclear envelope reforms and the chromatin decondenses. Cytokinesis begins as the gaps of microtubules form. |                           |                          |
| Plant Cells                     |  |  |  |   |  |                           |                          |



# The experiment



**Conclusion**

**ACADEMIC SUCCESS!**

## **P6 Dismissal Procedures and Expectations**

- Car riders should meet their rides at the car pick-up area between building 1 and 2.
- Students are to leave campus at dismissal.

## P6 Closure

List three goals you have for this year.

## **P6 Exit Ticket**

Write 2 -3 sentences about how Lake Weir High School can help you be successful in life.