

P5 Bell Work: I will identify one of the Hurricane Habits and describe in three to five sentences its importance.

Bell Schedule

| | |
|---------------|--------------------|
| Warning Bell | 9:20 |
| 1st Period | 9:25-10:17 |
| | change 10:17-10:22 |
| 2nd Period | 10:22-11:22 |
| Announcements | 11:14-11:22 |
| | change 11:22-11:27 |
| 3rd Period | 11:27-12:49 |
| A lunch | 11:27-11:57 |
| B lunch | 12:19-12:49 |
| | change 12:49-12:54 |
| 4th Period | 12:54-1:46 |
| | change 1:46-1:51 |
| 5th Period | 1:51-2:43 |
| | change 2:43-2:48 |
| 6th Period | 2:48-3:40 |

6 Period Day



Block Day



| | |
|----------------|--------------------|
| Warning Bell | 9:20 |
| 1st/2nd Per | 9:25-11:05 |
| Announcements | 11:05-11:12 |
| | change 11:12-11:17 |
| 3rd/4th Per | 11:17-1:23 |
| A lunch | 11:17-11:43 |
| B lunch | 12:57-1:23 |
| | change 1:23-1:28 |
| Club/Cane | 1:28-1:55 |
| Make-up Period | |
| | change 1:55-2:00 |
| 5th/6th Per | 2:00-3:40 |

Dates for Block: 8/17-18; 8/31-9/1; 9/14-15; 9/28-29; 10/12-13; 10/26-27;
11/9-10; 11/30-12/1; 12/14-15; 1/11-12; 1/25-26; 2/8-9; 2/22-23; 3/8-9;
3/29-30; 4/5-6; 4/12-13; 4/26-27; 5/10-11

Early Release



| | |
|---------------|--------------------|
| Warning Bell | 9:20 |
| 1st/2nd Per | 9:25-10:34 |
| Announcements | 10:34-10:42 |
| | change 10:42-10:47 |
| 3rd/4th Per | 10:47-11:56 |
| | change 11:56-12:01 |
| 5th/6th Per | 12:01-1:40 |
| A lunch | 12:01-12:31 |
| B lunch | 12:36-1:06 |

Essential Question:

How will I contribute to the Lake Weir High School community in a positive way?

What to expect from
Biology Class?

What is expected of you?

Materials



Materials

Materials must be brought to class on a daily basis!

Daily tools:Daily tools:

- **Pencil**
- **Pen**
- **Composition Notebook**

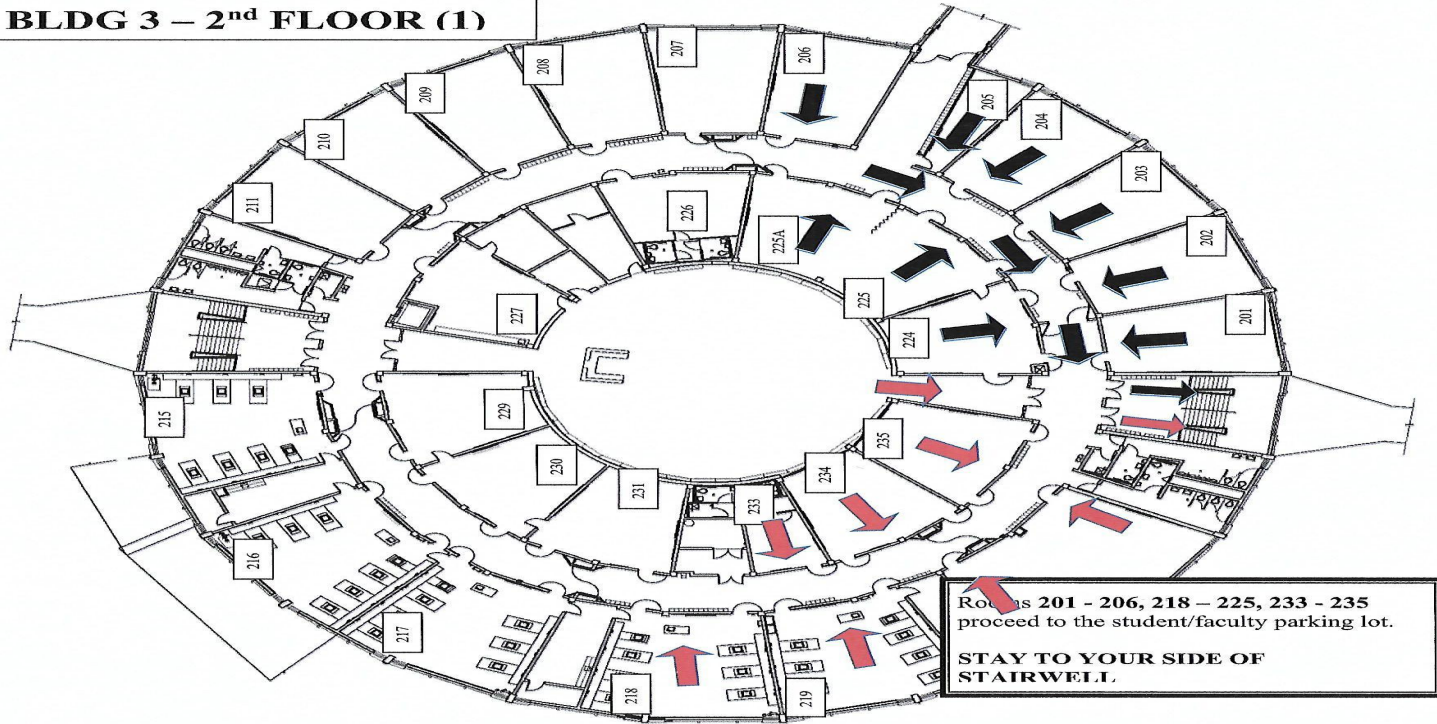
Personal tools:

- **Positive attitude**
 - **Open mind**
 - **Work Ethic**
-

Lake Weir High School Procedures

FIRE AND EVACUATION ROUTE

BLDG 3 – 2nd FLOOR (1)



Rooms 201 - 206, 218 - 225, 233 - 235
proceed to the student/faculty parking lot.

**STAY TO YOUR SIDE OF
STAIRWELL.**

- **Sign-Out Procedures**
- **Tardy Log**
- **Dismissal Procedure**
- **Common Boards**
- **[Class Webpage](#)**

P5 Tardy Policy

Lake Weir's tardy policy of a consequence assigned at the 5th Tardy with a reset at the semester.

- More than 5 unexcused absences may result in the student's inability to participate in extracurricular activities.

Hypothesis



What do you expect to happen upon completion of this course?

What does Ms. Santana
expect from you?

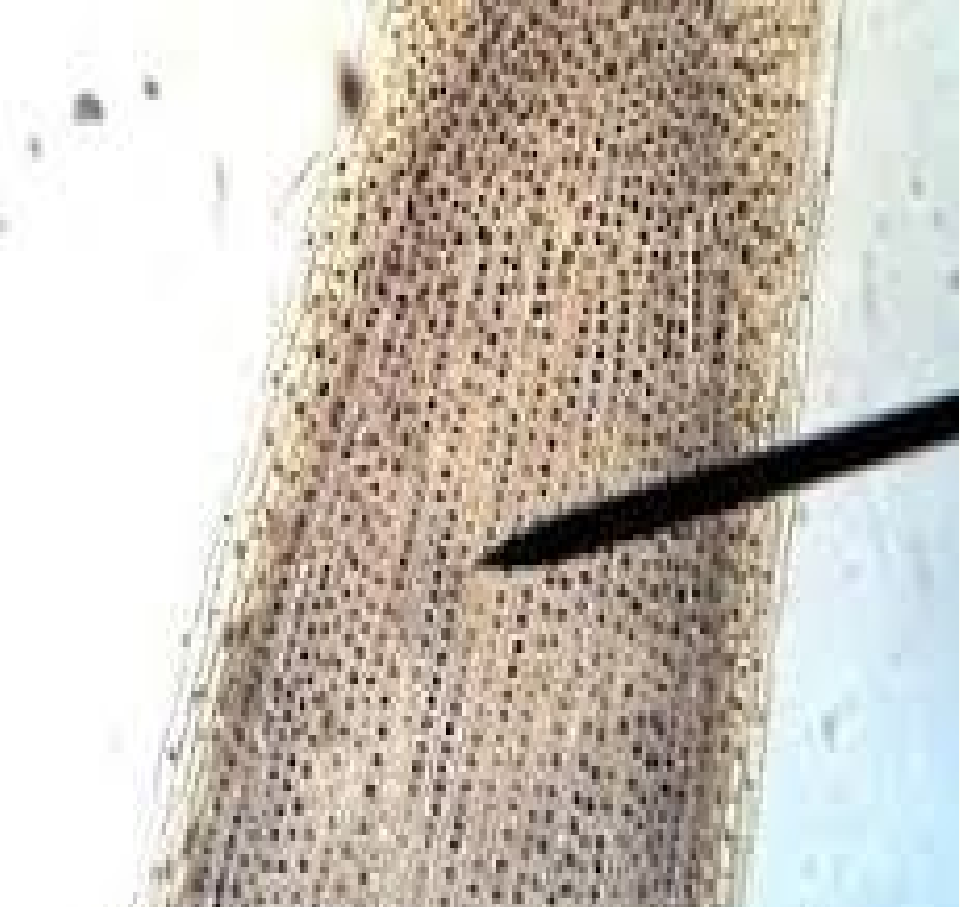
Hypothesis support

I think each individual student will achieve an above average score in all Florida Standard Assessments and pass this course with a true knowledge of Biology.

Variables that may affect the outcome...

- Attitude
- Perseverance
- Responsibility
- Respect
- Service

| INTERPHASE | | MITOSIS | | | | |
|---------------------------------|------------------|---|--|--|--|--|
| | | Prophase | Prometaphase | Metaphase | Anaphase | Telophase and Cytokinesis |
| Two centrosomes | Nuclear envelope | Microtubules forming spindle poles Chromosomes consisting of two sister chromatids | Spindle poles | Metaphase plate | Daughter chromosomes | Nuclear envelope forming Chromosomes decondensing |
| Chromatin | Nuclear envelope | Centrosomes | Fragments of nuclear envelope | | | Planes of constriction |
| The nucleus replicates its DNA. | | The chromatin coils to form chromosomes. | The nuclear envelope breaks down. Microtubules connect the centrosomes to the chromosomes. | The microtubules line up the chromosomes at the cell's center. | The chromatids separate, and the new chromosomes pull toward the two opposite poles. | The separating chromosomes reach the poles. The nuclear envelopes re-form and the daughter chromosomes. Cytokinesis begins as the gaps of constriction form. |
| Plant Cells | | | | | | |
| | | | | | | |



The experiment

Conclusion

ACADEMIC SUCCESS!

P5 Think -Pair- Write

- **Why is it important for students to be at school on time?**
- **Why is it important for students to be at school every day?**
- **Pair off students with a nearby partner or pre-arranged pairing.**
- **Have them share their responses with their partner.**

P5 Exit Ticket

I will identify one of the Hurricane Habits and describe in three to five sentences its importance.