

P3 Bell Work: Our third Hurricane Habit is “**We Persevere**” We never give up. Have students write down ways that they can persevere in the following areas:

- **Classroom**
- **Hallway**
- **Café**
- **Bus**

Bell Schedule

Warning Bell	9:20
1st Period	9:25-10:17
	change 10:17-10:22
2nd Period	10:22-11:22
Announcements	11:14-11:22
	change 11:22-11:27
3rd Period	11:27-12:49
A lunch	11:27-11:57
B lunch	12:19-12:49
	change 12:49-12:54
4th Period	12:54-1:46
	change 1:46-1:51
5th Period	1:51-2:43
	change 2:43-2:48
6th Period	2:48-3:40

6 Period Day



Block Day



Warning Bell	9:20
1st/2nd Per	9:25-11:05
Announcements	11:05-11:12
	change 11:12-11:17
3rd/4th Per	11:17-1:23
A lunch	11:17-11:43
B lunch	12:57-1:23
	change 1:23-1:28
Club/Cane	1:28-1:55
Make-up Period	
	change 1:55-2:00
5th/6th Per	2:00-3:40

Dates for Block: 8/17-18; 8/31-9/1; 9/14-15; 9/28-29; 10/12-13; 10/26-27;
11/9-10; 11/30-12/1; 12/14-15; 1/11-12; 1/25-26; 2/8-9; 2/22-23; 3/8-9;
3/29-30; 4/5-6; 4/12-13; 4/26-27; 5/10-11

Early Release



Warning Bell	9:20
1st/2nd Per	9:25-10:34
Announcements	10:34-10:42
	change 10:42-10:47
3rd/4th Per	10:47-11:56
	change 11:56-12:01
5th/6th Per	12:01-1:40
A lunch	12:01-12:31
B lunch	12:36-1:06

Essential Question:

How will I contribute to the Lake Weir High School community in a positive way?

What to expect from
Biology Class?

What is expected of you?

Materials



Materials

Materials must be brought to class on a daily basis!

Daily tools:Daily tools:

- **Pencil**
- **Pen**
- **Composition Notebook**

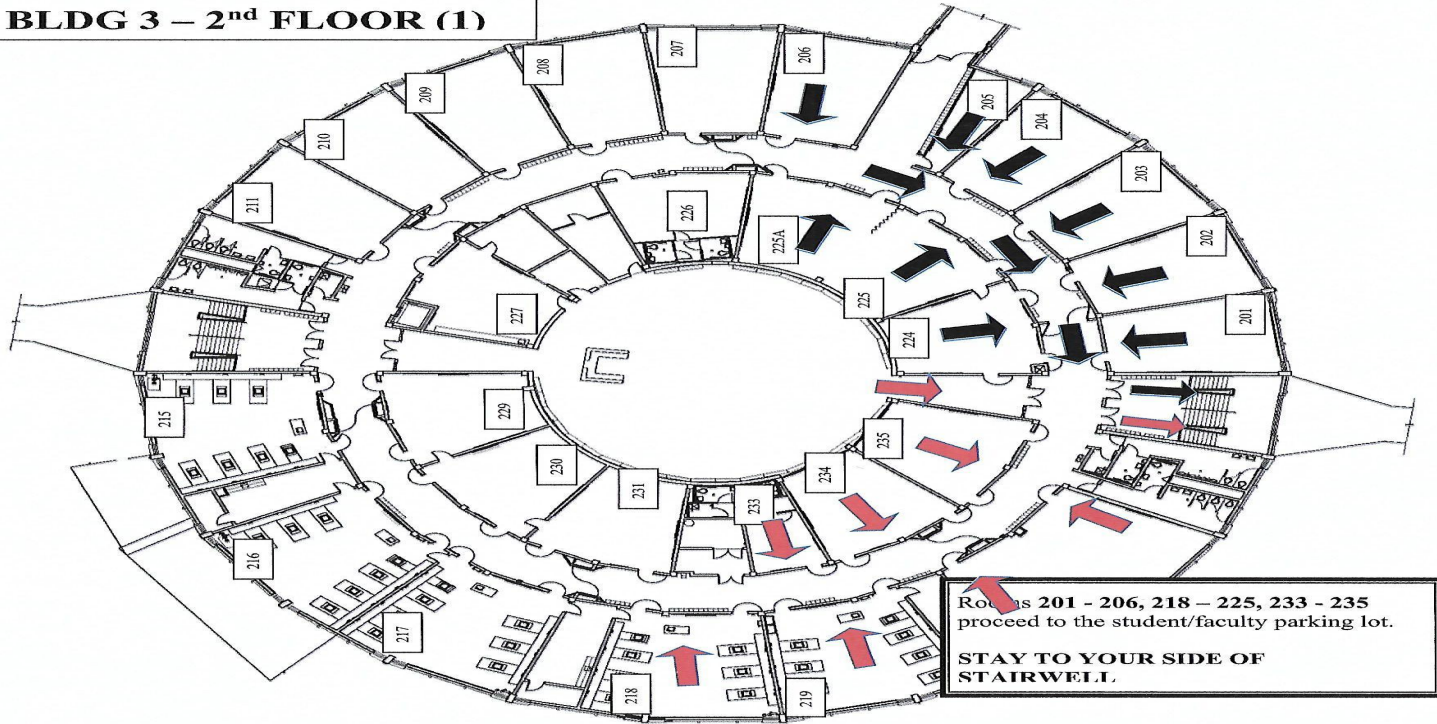
Personal tools:

- **Positive attitude**
 - **Open mind**
 - **Work Ethic**
-

Lake Weir High School Procedures

FIRE AND EVACUATION ROUTE

BLDG 3 – 2nd FLOOR (1)



- **Sign-Out Procedures**
- **Tardy Log**
- **Dismissal Procedure**
- **Common Boards**
- **Class Webpage**

Hypothesis



What do you expect to happen upon completion of this course?

What does Ms. Santana
expect from you?

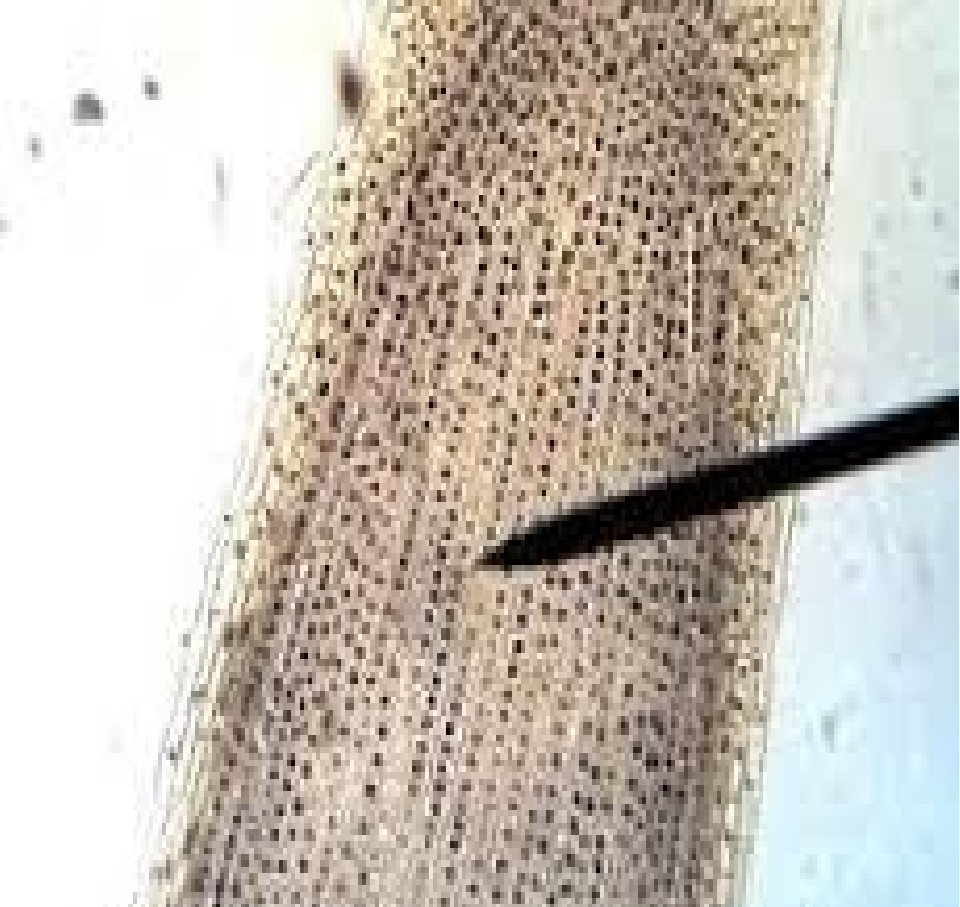
Hypothesis support

I think each individual student will achieve an above average score in all Florida Standard Assessments and pass this course with a true knowledge of Biology.

Variables that may affect the outcome...

- Attitude
- Perseverance
- Responsibility
- Respect
- Service

INTERPHASE		MITOSIS				
		Prophase	Prometaphase	Metaphase	Anaphase	Telophase and Cytokinesis
Two centrosomes	Nuclear envelope	Microtubules forming spindle poles	Spindle poles	Metaphase plate	Daughter chromosomes	Nuclear envelope forming
Chromatin	Nuclear envelope	Chromosomes consisting of two sister chromatids	Fragment of nuclear envelope			Chromosomes decondensing
		Centrioles	Pair of spindle fibers			Plane of constriction
The nucleus replicates its DNA.	The chromatin coils to form chromosomes.	The nuclear envelope breaks down. Microtubules connect the centrosomes to the chromosomes.	The microtubules line up the chromosomes at the cell's center.	The chromatids separate, and the new chromosomes pull toward the cell poles.	The separating chromosomes reach the poles. The nuclear envelope reforms and the chromatin decondenses. Cytokinesis begins as the gaps of constriction form.	
Plant Cells						



The experiment

Conclusion

ACADEMIC SUCCESS!

P3 Cane Period

Club Cane Make-Up Period – this is a period offered during block days that will be used for club meetings and to make-up missed classwork.

P3 Closure Clubs

Supplement Description	Last Name	First Name	OS/NI/Sub/Tchr
School Publications (Newspaper/Web/Yearbook) II	Mott	Christopher	Tchr
Drama Coach (High School) III	Currier	Grace	Tchr
Freshman Class	Gibb	John	Tchr
Graduation Coordinator	Ferguson	Susan	Tchr
High School Academic Team Supplement (1 per School)	Fox	Ronda	Tchr
Junior Class			
Senior Class			
Sophomore Class	Provost	Scott	Tchr
Student Council	Soucey	Lori	Tchr
FFA - Future Farmers of America (High School)	Shannon	Pamela	Tchr
FPSA - Florida Public Service of America (Criminal Justice)	Cannon	Jonathan	Tchr

P3 Clubs continued:

HOSA - Health Occupation Students of America	Troup	Sharon	Tchr
STN - Student Television Network (TV Productions)	Bennett	Travis	Tchr
TSA - Technology Student Association	Natalino	Mason	Tchr
Spanish	Ciatti	Elsa	Tchr
ASTRA	Martinez	Rossana	NI
FCA - Fellowship of Christian Athletes	Geisel	Robert	Tchr
Key	Martinez	Rossana	NI

P3 Closure – I will list three clubs or activities that I am interested in becoming involved in at Lake Weir High School.

Exit Ticket!

The presentation provided you with insights on school & class expectations! The presentation also used the Scientific Method steps.

Checking your recall and answer in your class journal notebook! Turn in journal before the bell!

1. What were the steps in the presentation? (Place them in Order)
2. Now that you recalled the steps, explain what processes are used to answer questions in science?

Reminder to log into the class Google Classroom and complete homework assignment!