

P2 Bell Work: Our second Hurricane Habit is “**We are Respectful**” We value each other, our school and community. Have students write down ways that they can be respectful in the following areas:

- Classroom
- Hallway
- Café
- Bus

# Bell Schedule

Warning Bell	9:20
1st Period	9:25-10:17
	change 10:17-10:22
2nd Period	10:22-11:22
Announcements	11:14-11:22
	change 11:22-11:27
3rd Period	11:27-12:49
A lunch	11:27-11:57
B lunch	12:19-12:49
	change 12:49-12:54
4th Period	12:54-1:46
	change 1:46-1:51
5th Period	1:51-2:43
	change 2:43-2:48
6th Period	2:48-3:40

## 6 Period Day



## Block Day



Warning Bell	9:20
1st/2nd Per	9:25-11:05
Announcements	11:05-11:12
	change 11:12-11:17
3rd/4th Per	11:17-1:23
A lunch	11:17-11:43
B lunch	12:57-1:23
	change 1:23-1:28
Club/Cane	1:28-1:55
Make-up Period	
	change 1:55-2:00
5th/6th Per	2:00-3:40

Dates for Block: 8/17-18; 8/31-9/1; 9/14-15; 9/28-29; 10/12-13; 10/26-27;  
11/9-10; 11/30-12/1; 12/14-15; 1/11-12; 1/25-26; 2/8-9; 2/22-23; 3/8-9;  
3/29-30; 4/5-6; 4/12-13; 4/26-27; 5/10-11

## Early Release



Warning Bell	9:20
1st/2nd Per	9:25-10:34
Announcements	10:34-10:42
	change 10:42-10:47
3rd/4th Per	10:47-11:56
	change 11:56-12:01
5th/6th Per	12:01-1:40
A lunch	12:01-12:31
B lunch	12:36-1:06

# Biology

—

By Ivonne Santana



Essential Question:

How will I contribute to the Lake Weir High School community in a positive way?

What to expect from  
Biology Class?

What is expected of you?

# Materials



# Materials

**Materials must be brought to class on a daily basis!**

## **Daily tools:Daily tools:**

- **Pencil**
- **Pen**
- **Composition Notebook**

## **Personal tools:**

- **Positive attitude**
  - **Open mind**
  - **Work Ethic**
-

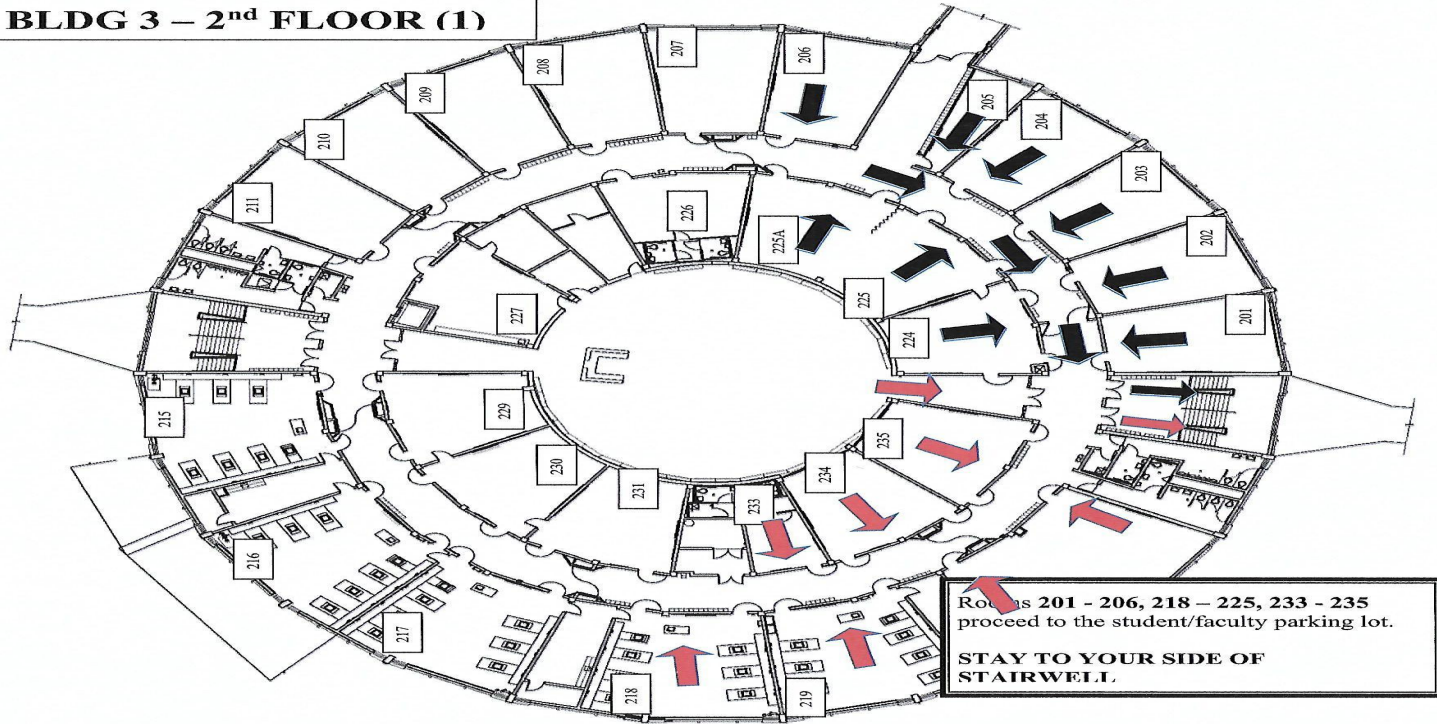
# Lake Weir High School Procedures

---



# FIRE AND EVACUATION ROUTE

**BLDG 3 – 2<sup>nd</sup> FLOOR (1)**



- Sign-Out Procedures
- Tardy Log
- Dismissal Procedure
- Common Boards
- Class Webpage
- Shoulder Partners



# Hypothesis



What do you expect to happen upon completion of this course?


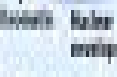





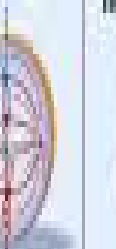







What does Ms. Santana  
expect from you?

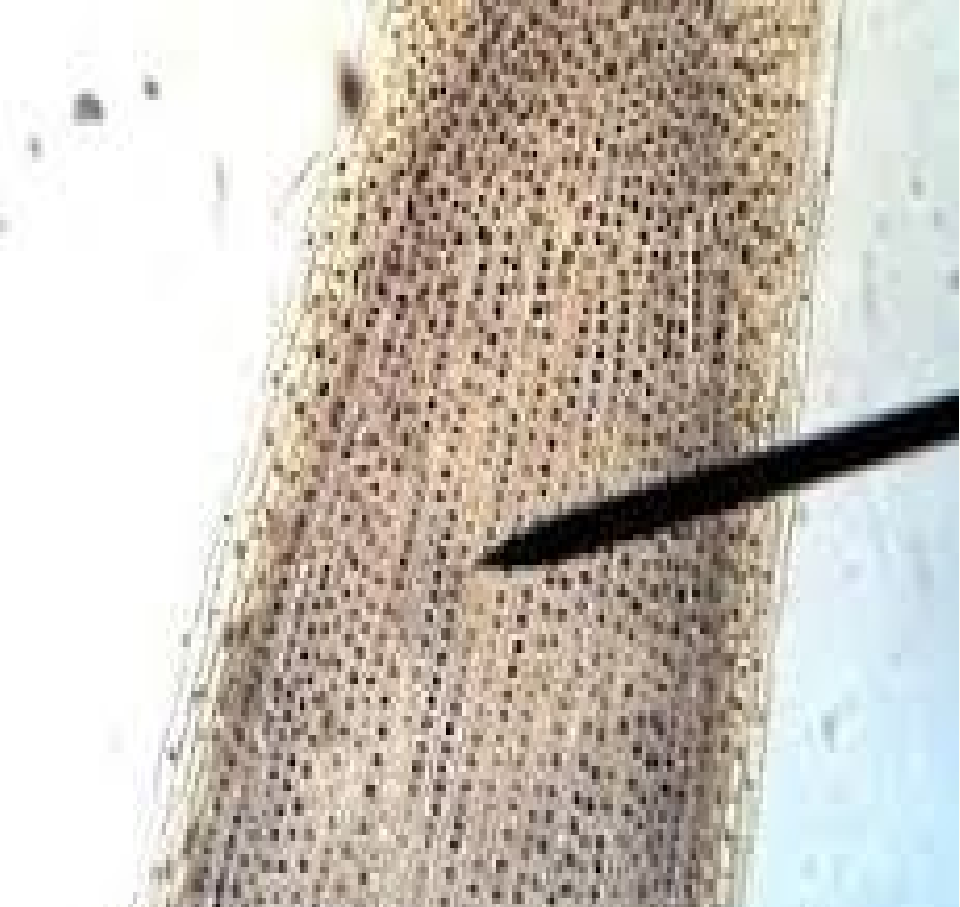
# Hypothesis support

**I think each individual student will achieve an above average score in all Florida Standard Assessments and pass this course with a true knowledge of Biology.**

**Variables that may affect the outcome...**

- Attitude
- Perseverance
- Responsibility
- Respect
- Service

INTERPHASE		MITOSIS				
		Prophase	Prometaphase	Metaphase	Anaphase	Telophase and Cytokinesis
<p><b>Two centrosomes</b></p>  <p><b>Chromatin</b></p> 	<p><b>Nuclear envelope</b></p>  <p><b>Centrosomes</b></p> 	<p><b>Chromosomes condensing</b></p>  <p><b>Spindle poles</b></p> 	<p><b>Metaphase plate</b></p> 	<p><b>Daughter chromosomes</b></p> 	<p><b>Nuclear envelope forming</b></p>  <p><b>Chromosomes decondensing</b></p> 	
<p>The nucleus replicates its DNA.</p>	<p>The envelope splits to form chromosomes.</p>	<p>The nuclear envelope breaks down. Microtubules connect the chromosomes to the centrosomes.</p>	<p>The microtubules line up the chromosomes at the cell's center.</p>	<p>The chromatids separate, and the new chromosomes pull toward the cell poles.</p>	<p>The separating chromosomes reach the poles. The nuclear envelope reforms and the chromatin decondenses. Cytokinesis begins as the gaps of microtubule fibers.</p>	
<b>Plant Cells</b>						



# The experiment



**Conclusion**

**ACADEMIC SUCCESS!**

# Exit Ticket!

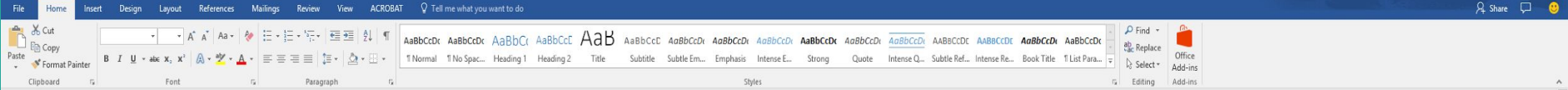
The presentation provided you with insights on school & class expectations! The presentation also used the Scientific Method steps.

**Checking your recall and answer in your class journal notebook! Turn in journal before the bell!**

1. What were the steps in the presentation? (Place them in Order)
2. Now that you recalled the steps, explain what processes are used to answer questions in science?

**Reminder to log into the class Google Classroom and complete homework assignment!**

# P2 Closure Lunch Schedules:



## 2017-2018 Lunch Schedule

A LUNCH	
Cannon	3-142
Downs	3-103
Elliatter	3-215
English	3-118
Fox	3-123
Foy	3-207
Fray	3-202
Fronius	3-111
Gallegos	3-101
Geisel	3-119
Graham	3-217
Hannon	3-219
Hill	3-208
Jennings	5-017
Kelsen	P-2
Kennedy	3-209
Lopez	P-2
Martin	3-206
Matthews	3-102
McAllister	3-201
Mechnig	3-216
Mintner	3-110
Mott	3-230
Perez	3-124
Peters	3-114
Richardson	3-134
Rosales	P-2
Sanders	3-234
Santana	3-218
Smith	3-225
St. Germain	3-210
Tanous/Duvall	3-224
TBA Eng	3-125
TBA McCall	3-203
Williams	3-120
Yourawski	3-211

B LUNCH	
Blackson	4-122
Cabezudo	4-224
Cahill	4-225
Chambless	5-105/GYM
Clatti	4-226
Cunningham	4-104
Currier	4-120
Draizin	6-009
Gagnier	4-106
Garcia	6-001
Geffrand	3-126
Gibb	4-105
Gray	4-109
Hatted	4-211
Johnson, M	4-102
Johnson, O	4-203
Landry	4-205
Lind	4-219
Magee	4-220
McKinney	3-229/GYM
McNamee	4-206
Menadier	4-128
Mr. Bennett	7-006
Natalino	6-006
Nelson	4-227
Provost	4-202
Roskovich	4-213
Runnels	4-204
Scott	7-001
Shannon	6-003
Soucey	4-129
Tarnton	4-103
Thiopen	3-113
Troup	7-002
Watts	4-107
Weatherwalks	4-207